

Supporting Information for

# **Observation of Arctic surface currents using data from a surface drifting buoy**

## **Contents of this file**

Figures S1 to S2

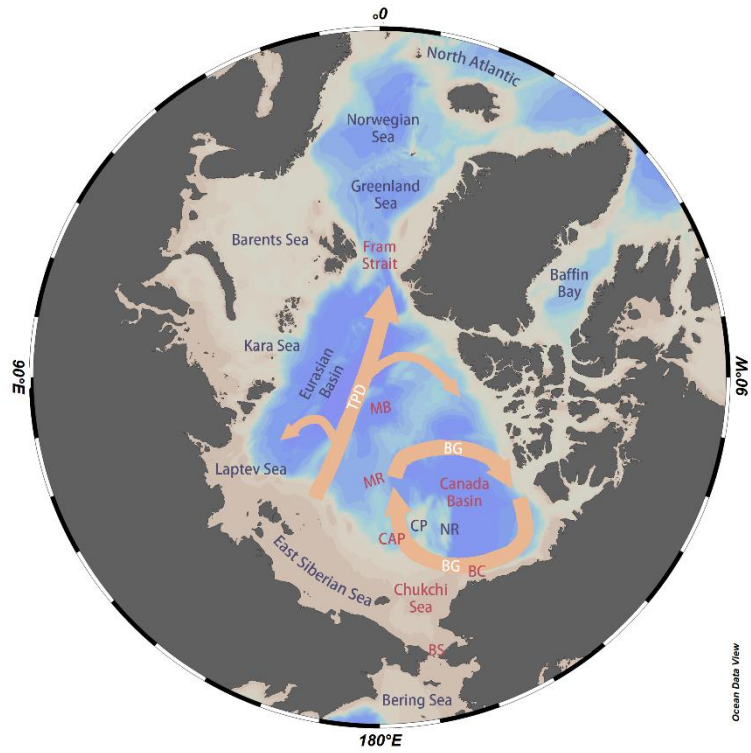


Figure S1. Map of the Arctic Ocean and surrounding seas. Orange arrows highlight the location of two surface currents, whose names are labeled white and abbreviated as follows: BG, Beaufort Gyre; TPD, Transpolar Drift. Many places are labeled with abbreviations: BS, Bering Strait; BC, Barrow Canyon; CAP, Chukchi Abyssal Plain; MR, Mendeleev Ridge; MB, Makarov Basin; NR, Northwind Ridge; CP, Chukchi Plateau.

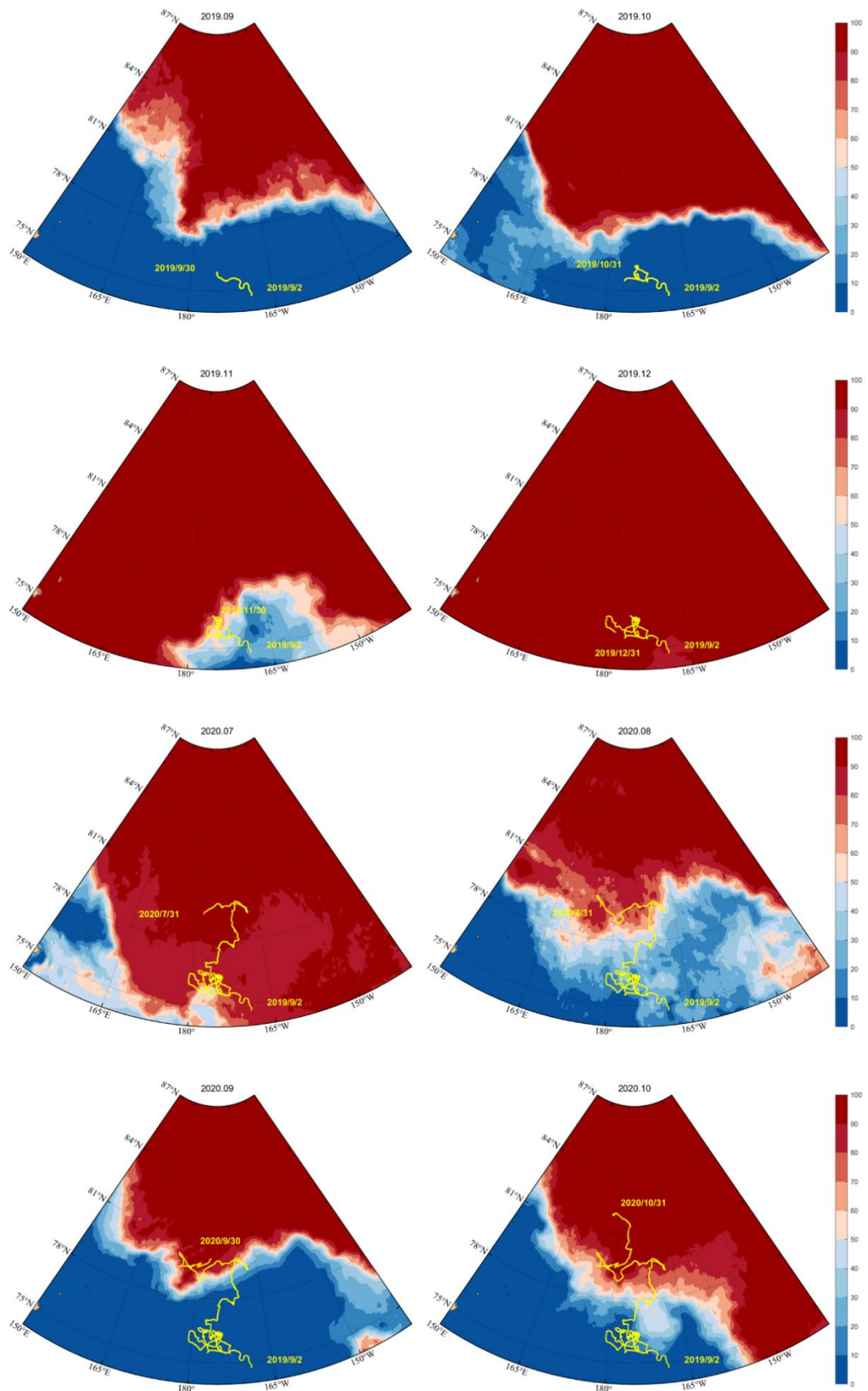


Fig. S2 Monthly mean sea ice concentration from September to December 2019 and from July to October 2020. The drifter trajectories of the buoy are superimposed on the figure in yellow.